

# Colonial Heights Elementary School

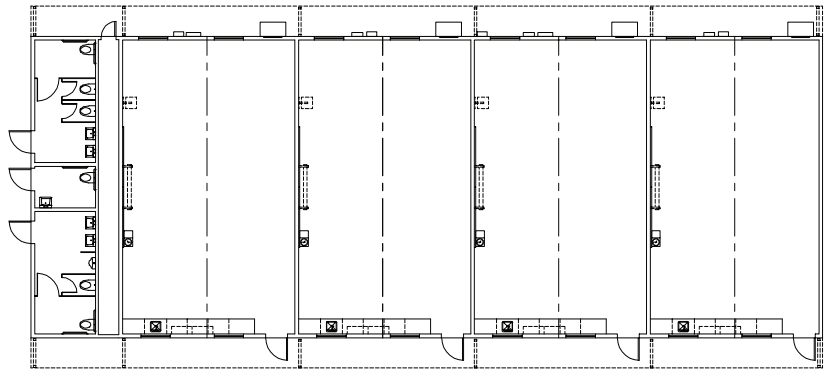


Owner: Lincoln Unified School District  
Architect: Lionakis Beaumont Design Group  
Construction Management: Blach Construction

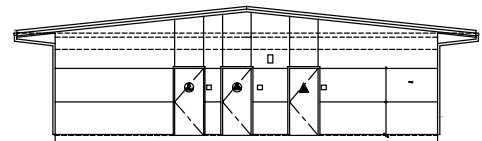
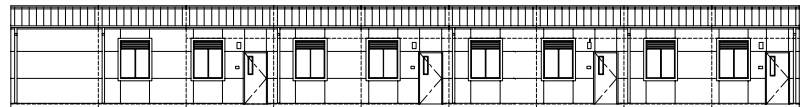
ENVIROPLEX  
High Performance Modular Buildings



Lincoln USD in Stockton performed a major remodel at the Colonial Heights E campus during the summer of 2008. Included was a new Enviroplex 108' x 40' classroom building with integral restrooms. The building, as design by LBDG, incorporated low VOC products and sustainable materials. The Enviroplex pitched roof design incorporates a Title 24-certified Cool Roof, including six Solutube skylights per classroom and a high reflectivity/low emissivity standing seam roof covering. The high efficiency HVAC system and Dual Glaze Low-E windows throughout maximize energy efficiency. The restrooms utilize dual flow flush valves for reduced water usage and include upscale interior finishes.



Total SF – 4,320 @ ~ \$179/ft<sup>2</sup>  
 Building delivered on time and with no  
 Change Orders in July 2008.



### Key Building Features

- 108' x 40' pitched roof design
- Certified "Cool Roof" standing seam roof
- 3-coat site applied stucco system
- Custom color FRP exterior doors
- 12' x 40' restroom module (boy/staff/girl)
- 15 SEER wall hung heat pumps
- Dual Valve Water Saving Plumbing Fixtures
- 9 foot ceiling height
- Concrete foundation
- Finelite ICLS system
- Custom electrical distribution system
- Six Solutube skylights with power shades per classroom