

Albert Schweitzer Elementary School

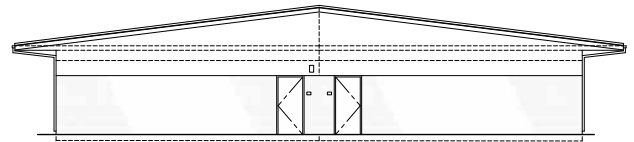
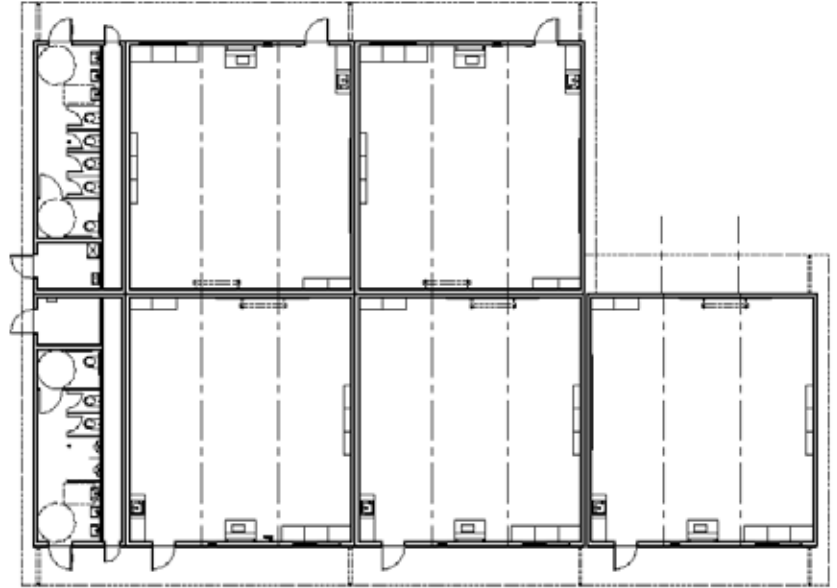


Owner: San Juan Unified School District
Architect: Lionakis Beaumont Design Group
Construction Management: Blach Construction

ENVIROPLEX, Inc.
Manufacturers of High Performance Modular Buildings



San Juan Unified School District required a major facelift to the Albert Schweitzer ES campus calling for removal of portables, upgrades to classroom space and additional restroom capacity. **Core to their needs was a design that seamlessly integrated into the existing campus.** The Enviroplex Steep Pitch Modular Design satisfied every expectation with matching roof colors, thin brick veneer, District customization and on time installation for the 08/09 school year.



San Juan Unified School District

Total Square Footage– 9,820

Key Building Features

- 64 x 72 Back to Back Cluster
- Back to Back Steep Pitch Roof Design
- Floater Classroom w/ Matching Bi-Pitch Slope
- Custom Color PTFE Coated Roof Pans
- Synthetic Stucco/Brick Veneer Mixed Exterior
- Interior “Quiet Climate” Heat Pumps
- Electrical Room with Major Panel Upgrades
- (2) 12x40 Restrooms w/ Cast Iron Waste
- Ceramic Tile RR Walls
- Epoxy Floors
- Dual Valve “Green” Plumbing Fixtures
- Rat Slab & Concrete Stem Wall Foundation
- 9 Foot Floor to Ceiling Classroom
- Operable Security Screens w/ Interior Release